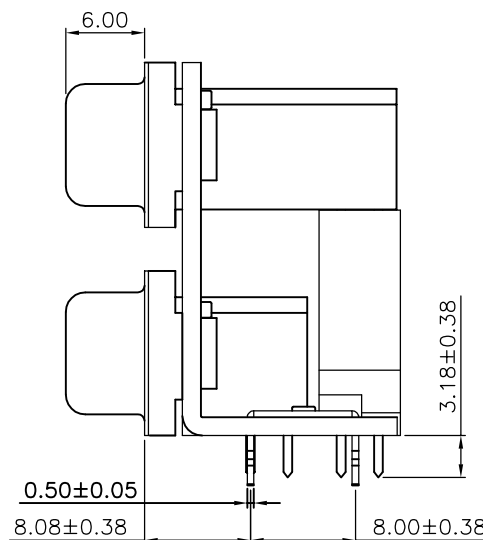
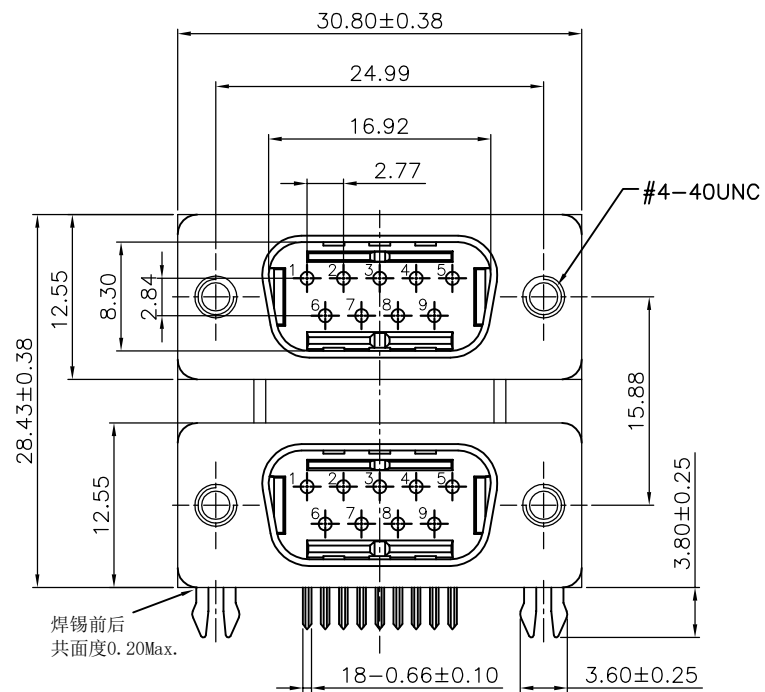


RoHS GP HF

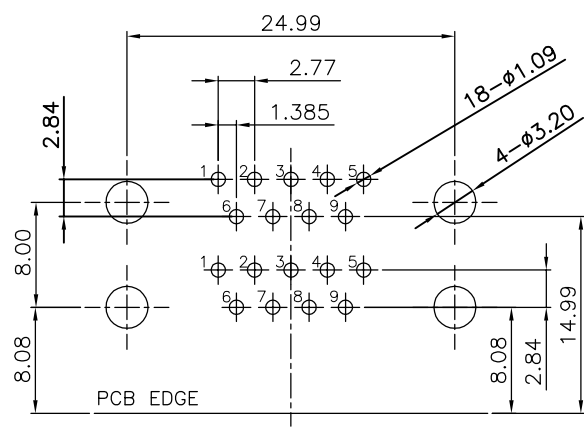
REV.	ECR/N NO.	DESCRIPTION	DRAWN	DATE
A	/	NEW	DENGJU	2020/06/03



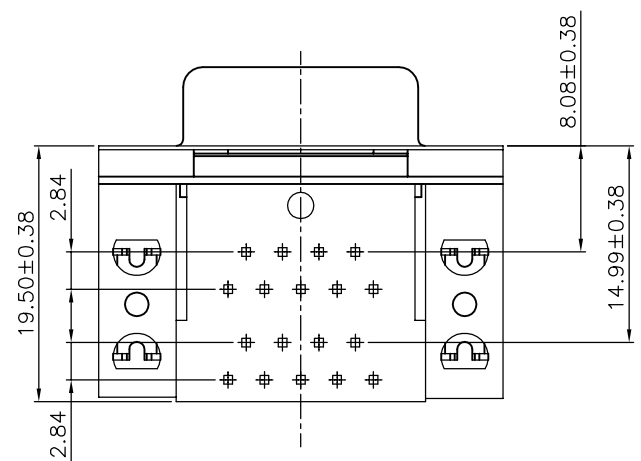
NOTES:

- MATERIAL:
 HOUSING: PA66,UL94V-0; COLOR: BLACK.
 CONTACT: C2680,T=0.20±0.05mm
 SHELL: SPCC.T=0.30±0.05mm
 RIVET: C3604.
 BOARD LOCK: SPCC.T=0.50±0.05mm
- FINISH:
 CONTACT: 0.5u" AU PLATED ON CONTACT AREA,
 50u" TIN PLATED ON SOLDER TAILS,
 30u" NICKEL UNDERPLATING OVER ALL.
 SHELL: 30u" NICKEL PLATING OVER ALL.
 RIVET: 30u" NICKEL PLATING OVER ALL.
 BOARD LOCK: 50u" TIN PLATED OVER ALL,
 30u" NICKEL UNDERPLATING OVER ALL.
- ENVIRONMENT:
 OPERATING TEMPERATURE:-55°C~+85°C.
 STORAGE CONDITION:0-40°C;HUMIDITY:70±10% RH.

焊锡前后
共面度0.20Max.



RECOMMENDED PCB LAYOUT
 DEFAULT TOLERANCE ±0.05



TOLERANCE	MODEL NAME: 双9公铜合 间距15.88MM PA66黑色 端子半金锡G.F 吸塑包装 RoHS环保 盐雾24H	DRAWN: DENGJU
X.X ±0.35	MODEL NO: WLDR-029D	CHECKED: YAOSHIXUAN
X.XX ±0.25	UNIT: SCALE: REVISION: SHEET	APPROVED: WUHUAMING
X.XXX ±0.10	mm 1:1 A 1/1	DATE: 2020/06/03
ANGLE ±2.0°	WILCO 深圳市兴万联电子有限公司 SHENZHEN XING WAN LIAN ELECTRONICS CO.,LTD.	DWG NO:
		FILE: C